

PRODUCT INFORMATION PACKET

marathon[®]
Motors

Model No: 143TTFR16032
Catalog No: GT3101
1,1800,TEFC,143JM,3/60/230/460
JM



Regal and Marathon are trademarks of Regal Beloit Corporation or one of its affiliated companies.
©2018 Regal Beloit Corporation, All Rights Reserved. MC017097E

REGAL[®]



Nameplate Specifications

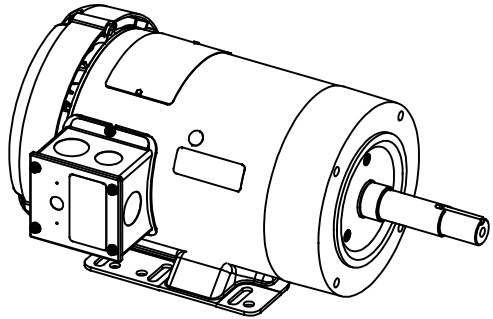
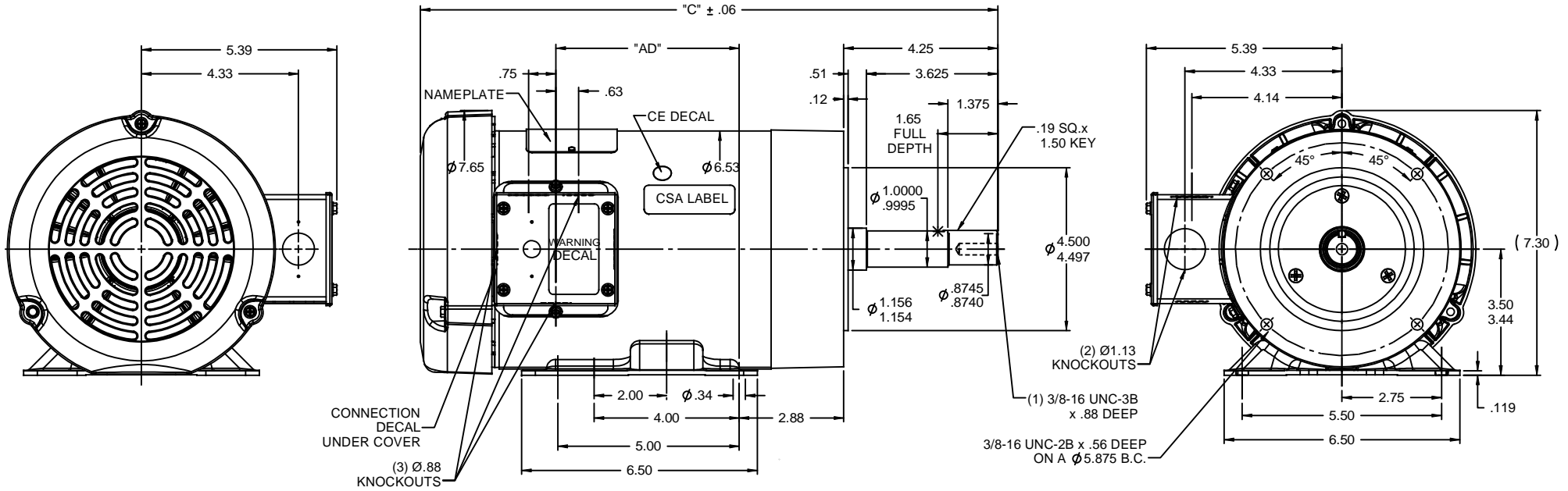
Output HP	1 Hp	Output KW	0.75 kW
Frequency	60 Hz	Voltage	230/460 V
Current	3.2/1.6 A	Speed	1760 rpm
Service Factor	1.15	Phase	3
Efficiency	85.5 %	Duty	Continuous
Insulation Class	F	Design Code	B
KVA Code	N	Frame	143JM
Enclosure	Totally Enclosed Fan Cooled	Overload Protector	No
Ambient Temperature	40 °C	Drive End Bearing Size	6206
Opp Drive End Bearing Size	6203	UL	Recognized
CSA	Y	CE	Y
IP Code	43		

Technical Specifications

Electrical Type	Squirrel Cage Induction Run	Starting Method	Across The Line
Poles	4	Rotation	Reversible
Mounting	Rigid base	Motor Orientation	Horizontal
Drive End Bearing	Ball	Opp Drive End Bearing	Ball
Frame Material	Rolled Steel	Shaft Type	JM
Overall Length	15.42 in	Frame Length	7.00 in
Shaft Diameter	0.875 in	Shaft Extension	4.25 in
Assembly/Box Mounting	F1 Only		
Outline Drawing	028958-700	Connection Diagram	005010.01ME

This is an uncontrolled document once printed or downloaded and is subject to change without notice. Date Created: 06/29/2018

RBC PROPRIETARY AND CONFIDENTIAL INFORMATION
 This document is the property of REGAL BELOIT CORPORATION ("RBC") including its subsidiaries and divisions and contains proprietary information of RBC. This document is loaned on the express condition that neither it nor the information contained therein shall be disclosed to others without the express written consent of RBC, and that the information shall be used by the recipient only as approved expressly by RBC. This document shall be returned to RBC upon its request. This document may be subject to certain restrictions under U.S. export control laws and regulations.



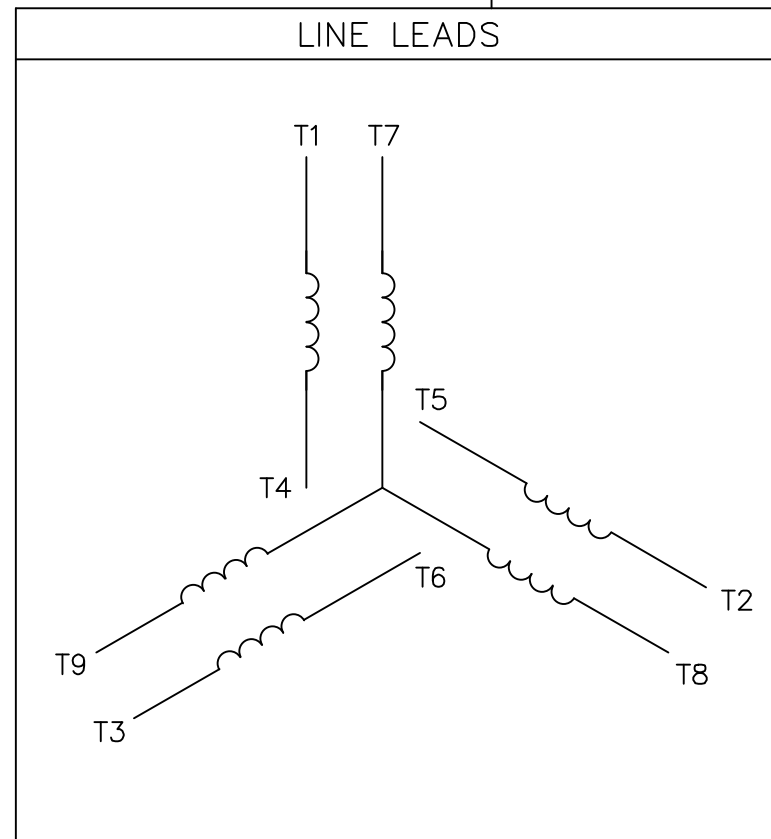
DASH #	"C"	"AD"
700	15.42	4.55
750	15.92	5.05
800	16.42	5.55

NOTE:
 1) GASKETS THROUGHOUT

MAXIMUM FACE RUNOUT TO BE .004 T.I.R
 MAXIMUM PILOT ECCENTRICITY .004 T.I.R
 PERMISSIBLE SHAFT RUNOUT .002 T.I.R

TOLERANCES UNLESS SPECIFIED		MARATHON ELECTRIC		DRAWN VS 08/13/09	
DEC	INCHES			CHK	
x	±.1			APPR VS 08/13/09	
.xx	±.03	TITLE OUTLINE - 140JM FRAME		SCALE 3:8	
.xxx	±.005	TEFC - RIGID		REF 028950	
.xxxx	±.0005	MATL		FMF	
NO	REVISION	BY & DATE	CHK ANG ±1/2"	FINISH	PAGE OF
	THIRD ANGLE PROJECTION		RFP	PREV	SIZE DRAWING NO
			NETWORK FILE NAME	B	028958
					REV

VIEW FROM OUTSIDE OF MOTOR AT SWITCH END.



VOLTAGE	L1	L2	L3	JOIN & INSULATE
HIGH	T1	T2	T3	(T4,T7) (T5,T8) (T6,T9)
LOW	T1,T7	T2,T8	T3,T9	T4,T5,T6

		TOLERANCES UNLESS SPECIFIED		MARATHON ELECTRIC		DRAWN RDW 04/12/02	
		DEC.	INCHES			CHK	
		.X	±.1			APPD	
		.XX	±.01	TITLE EXTERNAL WIRING DIAGRAM 3 PHASE W/O PROTECTOR		SCALE 1=1	
		.XXX	±.005			REF FIG.2-51	
		.XXXX	±.0005	MAT'L. DECAL - 004014		FMF	
NO.	REVISION	BY & DATE	CHK	ANG	FINISH	PREV	
			RFP	04/12/02	CAD FILE 00501001ME	SIZE A	DRAWING NO. 005010-01ME
			DIST				REV.

THIS DRAWING IN DESIGN AND DETAIL IS OUR PROPERTY AND MUST NOT BE USED EXCEPT IN CONNECTION WITH OUR WORK ALL RIGHTS OF DESIGN AND INVENTION ARE RESERVED THIS IS AN ELECTRONICALLY GENERATED DOCUMENT - DO NOT SCALE THIS PRINT

Data Sheet

Date: 29-06-2017
 Customer: _____
 Attention: _____
 Submitted by: FAREEDA DUDEKULA



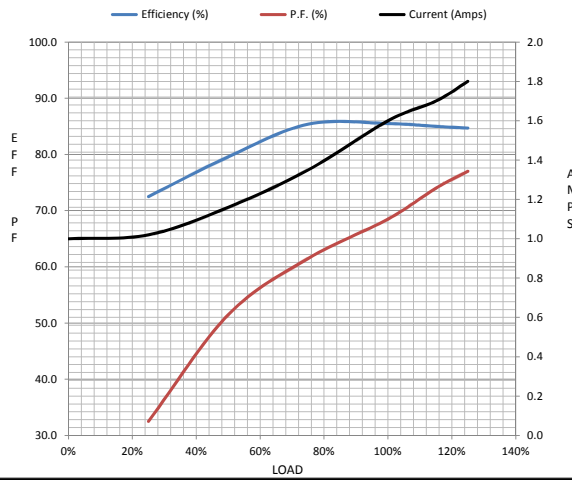
143TFR16032

Submittal

Data @ 460 V

Motor Load Data									
Load	0%	25%	50%	75%	100%	115%	125%	LR	
Current (Amps)	1.00	1.02	1.16	1.35	1.60	1.70	1.80	14.0	
Torque (ft-lb)	0.00	0.75	1.50	2.25	3.0	3.5	3.8	12.0	
RPM	1800	1789	1779	1769	1760	1,750	1745	0	
Efficiency (%)		72.5	79.6	85.4	85.5	85.0	84.7		
P.F. (%)	8.0	32.5	51.5	61.5	68.5	74.0	77.0	41.0	

Motor Speed Data						Information Block				
	LR	Pull-Up	BD	Rated	Idle					
Speed (RPM)	0	900	1170	1760	1800	HP	1.0			
Current (Amps)	14.0	13.0	9.9	1.60	1.00	Sync. RPM	1800			
Torque (ft-lb)	12.0	11.9	15.8	3.0	0.00	Frame	140			
						Enclosure	TEFC			
						Construction	TFR			
						Voltage	230/460 V			
						Frequency	60 Hz			
						Design	B			
						LR Code letter	N			
						Service Factor	1.15			
						Temp Rise @ FL	38 ° C			
						Duty	CONT			
						Ambient	40 ° C			
						Elevation	1,000 feet			
						Rotor/Shaft wk²	0.12 Lb-Ft²			
						Ref Wdg	T634342 FR			
						Sound Pressure @ 1M	65 dBA			
						VFD Rating	NONE			
						Outline Dwg	028958-700			
						Conn. Diag	005010.01ME			
						Additional Specifications:				
						0				
						365THFS8036				
						EQUIV CKT (OHMS / PHASE)				
						R1	R2	X1	X2	Xm
						0.0000	0.0000	0.0000	0.0000	0.0000



HP	1.0			
Sync. RPM	1800			
Frame	140			
Enclosure	TEFC			
Construction	TFR			
Voltage	230/460 V			
Frequency	60 Hz			
Design	B			
LR Code letter	N			
Service Factor	1.15			
Temp Rise @ FL	38 ° C			
Duty	CONT			
Ambient	40 ° C			
Elevation	1,000 feet			
Rotor/Shaft wk²	0.12 Lb-Ft²			
Ref Wdg	T634342 FR			
Sound Pressure @ 1M	65 dBA			
VFD Rating	NONE			
Outline Dwg	028958-700			
Conn. Diag	005010.01ME			
Additional Specifications:				
0				
365THFS8036				
EQUIV CKT (OHMS / PHASE)				
R1	R2	X1	X2	Xm
0.0000	0.0000	0.0000	0.0000	0.0000

